

Corporate Information / Stock Information As of March 31, 2016

Corporate Information

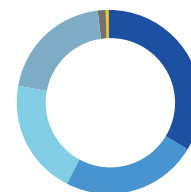
Corporate Name	SOHGO SECURITY SERVICES CO., LTD.
Head Office	1-6-6 Motoakasaka, Minato-ku, Tokyo 107-8511, Japan
Established	July 16, 1965
Capital	¥18,675 million
Fiscal Year-End	March 31
Employees	(Consolidated) 31,446 (Non-consolidated) 12,290
Business Operations	Head office / 10 Headquarters / 65 Branches / 38 Offices / 244 Sales offices

Stock Information

Total Number of Shares Authorized	300,000,000
Number of Shares Issued	102,040,042 (including 1,506,740 shares of treasury stock)
Number of Shareholders at the End of the Preceding Fiscal Period	10,091
Stock Listing	First Section of Tokyo Stock Exchange
Securities Code	2331
Minimum Trading Lot	100

Distribution of Shares by Shareholder Type

Financial Institutions	33.7%
Domestic Corporations	24.0%
Individuals and Other	20.2%
Foreign Investors	20.2%
Treasury Stock	1.5%
Securities Companies and Other	0.4%

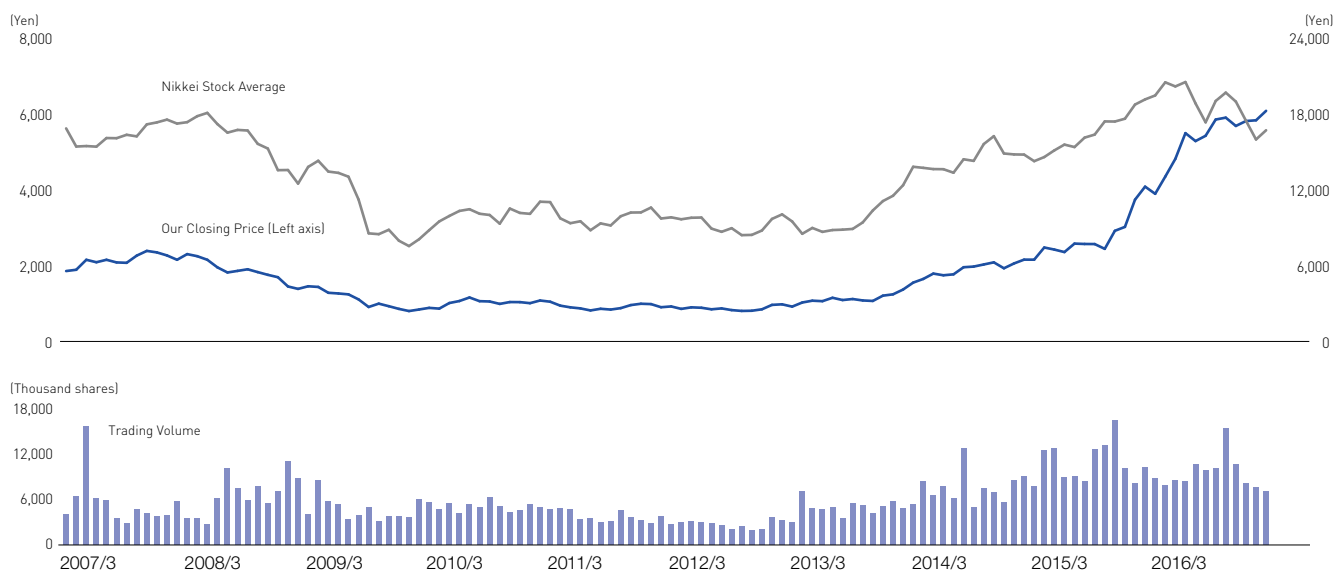


Major Shareholders (Top 10)

Name	Number of Shares Held (Thousand shares)	Controlling Share (%)
SOHGO CORPORATION	7,388	7.34
Saitama Machinery Co., Ltd.	5,283	5.25
Employees Shareholding Association	4,853	4.82
Trust & Custody Services Bank, Ltd. (as trustee for Mizuho Bank Ltd. Retirement Benefit Trust Account re-entrusted by Mizuho Trust and Banking Co., Ltd.)	4,261	4.23
Kamakura Corporation	4,150	4.12
Japan Trustee Services Bank, Ltd. (Trust account)	3,763	3.74
Sompo Japan Nipponkoa Insurance Inc.	3,441	3.42
Tokio Marine & Nichido Fire Insurance Co., Ltd.	3,420	3.40
Atsushi Murai	2,985	2.96
Kizuna Corporation	2,950	2.93

* Treasury stock (1,506,740 shares) has been excluded.

Stock Chart



ALSOK becomes a Tokyo 2020 official partner

In October 2015, ALSOK concluded an agreement with the Tokyo Organising Committee of the Olympic and Paralympic Games to become a Tokyo 2020 Official Partner in the category of "Security Services and Planning."

The Company has long contributed to the promotion of sports in Japan by producing many of the athletes that have represented the country in such Olympic sports as judo and wrestling. Leading up to Olympic and Paralympic Games Tokyo 2020, we will continue to support the efforts of our athletes. During the event itself, we will contribute to the event's success through rigorous security provided by an all-Japanese team.

